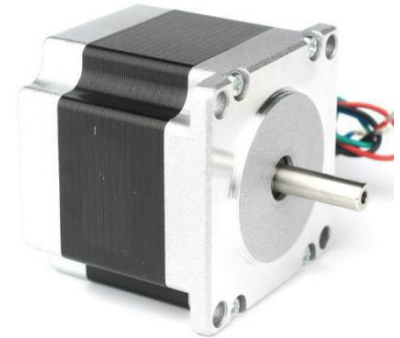


1.8° 57mm High Torque Hybrid Stepper Motor

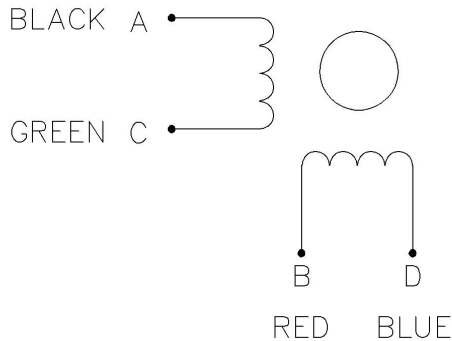
Item	Specifications
Step Angle	1.8°
Step Angle Accuracy	±5%(full step,no load)
Resistance Accuracy	±10%
Inductance Accuracy	±20%
Temperature Rise	80°C max
Ambient Temperature	-20°C~+50°C
Insulation Resistance	100 MΩ Min. .500VDC
Dielectric Strength	500VAC for 1minute
Shaft Radial Play	0.02Max. (450g-load)
Shaft Axial Play	0.08Max. (450g-load)
Max. radial force	75N (20mm from the flange)
Max. axial force	15N



57mm Hybrid Stepper Motor Specifications:

Model No.	Rated Voltage	Current /Phase	Resistance /Phase	Inductance /Phase	Holding Torque	# of Leads	Detent Torque	Rotor Inertia	Motor Length	Weight
	V	A	Ω	mH	kg.cm	No.	g.cm	g.cm ²	(L)mm	kg
JK57HS56-2804-01	2.5	2.8	0.9	2.5	12.6	4	350	280	56	0.68

Wiring Diagram:



Pull out Torque Curve:

