

TEST REPORT



Report No.: T1881700 02 REV1

Date: January 09, 2018

Page 1 of 8

Applicant: Shenzhen KEYES DIY Robot co., Ltd
Address: Room9A Jingxing Building, Changyong Road, Long Hua Xin Qu District, Shenzhen, China.

The following sample(s) and sample information was/were submitted and identified by/on the behalf of the client:

Sample Name: Sixteen relays -12V
Model No.: HIM01015
Trademark: HIMALAYA
Supplier: Shenzhen KEYES DIY Robot co., Ltd
Sample Received Date: November 14, 2018
Testing Period: November 14 – 23, 2018
Test Method & Test Result: Please refer to following pages.

Test Requested

As specified by client, according to RoHS Directive 2011/65/EU with amendment (EU) 2015/863 to test Lead (Pb), Cadmium (Cd), Mercury (Hg), Hexavalent Chromium(Cr(VI)), Polybrominated Biphenyls(PBBs), Polybrominated Diphenyl Ethers(PBDEs), Phthalates(DBP, BBP, DEHP, DIBP) in the submitted sample(s).

Result

Pass

Tested by:

Shayan Zhang

Approved by:

Tong Gung

Reviewed by:

Anne Zhao

Date of issue:

January 09, 2019



TEST REPORT



Report No.: T1881700 02 REV1

Date: January 09, 2018

Page 2 of 8

Test Method

(1) Screening limits for regulated elements according to IEC 62321-3-1:2013 (Unit: mg/kg)

Element	Polymers	Metals	Composite material
Pb	$BL \leq (700-3\sigma) < X < (1300+3\sigma) \leq OL$	$BL \leq (700-3\sigma) < X < (1300+3\sigma) \leq OL$	$BL \leq (500-3\sigma) < X < (1500+3\sigma) \leq OL$
Cd	$BL \leq (70-3\sigma) < X < (130+3\sigma) \leq OL$	$BL \leq (70-3\sigma) < X < (130+3\sigma) \leq OL$	$LOD < X < (150+3\sigma) \leq OL$
Hg	$BL \leq (700-3\sigma) < X < (1300+3\sigma) \leq OL$	$BL \leq (700-3\sigma) < X < (1300+3\sigma) \leq OL$	$BL \leq (500-3\sigma) < X < (1500+3\sigma) \leq OL$
Cr	$BL \leq (700-3\sigma) < X$	$BL \leq (700-3\sigma) < X$	$BL \leq (500-3\sigma) < X$
Br	$BL \leq (300-3\sigma) < X$	N/A	$BL \leq (250-3\sigma) < X$

(2) Screening limits for Phthalates

Test Item(s)	Screening limits(Unit: mg/kg)
Dibutyl phthalate(DBP)	$BL \leq 600 < X$
Benzylbutyl phthalate(BBP)	$BL \leq 600 < X$
Di-2-ethylhexyl phthalate(DEHP)	$BL \leq 600 < X$
Diisobutyl phthalate(DIBP)	$BL \leq 600 < X$

(3) Chemical Test

Test Item	Test Method	Test Instrument	MDL (mg/kg)	EU RoHS Limit (mg/kg)
Lead (Pb)	IEC 62321-5:2013	ICP-OES	2	1000
Cadmium (Cd)	IEC 62321-5:2013	ICP-OES	2	100
Mercury (Hg)	IEC 62321-4:2013 +AMD1:2017	ICP-OES	2	1000
Hexavalent Chromium (Cr(VI))	IEC 62321-7-2:2017 (non-metal)	UV-Vis	8	1000
	IEC 62321-7-1:2015 (metal)	UV-Vis	$0.1(\mu\text{g}/\text{cm}^2)$	/
Polybrominated Biphenyls (PBBs)	IEC 62321-6:2015	GC-MS	5	1000
Polybrominated Diphenyl Ethers (PBDEs)	IEC 62321-6:2015	GC-MS	5	1000
Phthalates(DBP, BBP, DEHP, DIBP)	IEC 62321-8:2017	GC-MS	50	1000

Remark:

BL = Under the screening limit
 OL = Above the screening limit
 X = The range of needing to do further testing
 3σ = The reproducibility of analytical instruments
 N/A = Not applicable
 LOD = Detection limit

Shenzhen Alpha Product Testing Co., Ltd.

Building i, No.2, Lixin Road, Fuyong Street, Bao'an District, 518103, Shenzhen, Guangdong, China

TEST REPORT



Report No.: T1881700 02 REV1

Date: January 09, 2018

Page 3 of 8

Tested Sample/Part Description

No.	Component Description	No.	Component Description
1.	Electrolytic capacitor	11.	Blue plastic of wire holder
2.	Black gum cover of inductor	12.	Silvery metal screw of wire holder
3.	Blue plastic of relay	13.	Silvery metal of wire holder
4.	Chip resistor	14.	White plastic of relay
5.	Diode	15.	Copper wire coil of relay
6.	IC	16.	Copper metal sheet of relay
7.	IC	17.	Silvery metal of relay
8.	Solder tin of PCB	18.	Silvery metal plug pin
9.	PCB	19.	Black plastic base
10.	Chip LED		

TEST REPORT



Report No.: T1881700 02 REV1

Date: January 09, 2018

Page 4 of 8

Tested Result

(1) Screening Result

Tested Item(s)	Screening Result									
	1	2	3	4	5	6	7	8	9	10
Lead (Pb)	BL	BL	BL	BL	BL	BL	BL	BL	BL	BL
Cadmium (Cd)	BL	BL	BL	BL	BL	BL	BL	BL	BL	BL
Mercury (Hg)	BL	BL	BL	BL	BL	BL	BL	BL	BL	BL
Total Chromium (Cr(VI))	BL	BL	BL	BL	BL	BL	BL	BL	BL	BL
Total Bromine (PBBs & PBDEs)	BL	BL	X*	BL	X*	BL	X*	N/A	X*	BL
Dibutyl phthalate(DBP)	BL	BL	BL	BL	BL	BL	BL	N/A	BL	BL
Benzylbutyl phthalate(BBP)	BL	BL	BL	BL	BL	BL	BL	N/A	BL	BL
Di-2-ethylhexyl phthalate(DEHP)	BL	BL	BL	BL	BL	BL	BL	N/A	BL	BL
Diisobutyl phthalate(DIBP)	BL	BL	BL	BL	BL	BL	BL	N/A	BL	BL

Tested Item(s)	Screening Result								
	11	12	13	14	15	16	17	18	19
Lead (Pb)	BL	BL	BL	BL	BL	BL	BL	BL	BL
Cadmium (Cd)	BL	BL	BL	BL	BL	BL	BL	BL	BL
Mercury (Hg)	BL	BL	BL	BL	BL	BL	BL	BL	BL
Total Chromium (Cr(VI))	BL	BL	BL	BL	BL	BL	BL	BL	BL
Total Bromine (PBBs & PBDEs)	BL	N/A	N/A	X*	N/A	N/A	N/A	N/A	X*
Dibutyl phthalate(DBP)	BL	N/A	N/A	BL	N/A	N/A	N/A	N/A	BL
Benzylbutyl phthalate(BBP)	BL	N/A	N/A	BL	N/A	N/A	N/A	N/A	BL
Di-2-ethylhexyl phthalate(DEHP)	BL	N/A	N/A	BL	N/A	N/A	N/A	N/A	BL
Diisobutyl phthalate(DIBP)	BL	N/A	N/A	BL	N/A	N/A	N/A	N/A	BL

TEST REPORT



Report No.: T1881700 02 REV1

Date: January 09, 2018

Page 5 of 8

(2) Test result for Chemical Confirmation

(a) The test result of PBBs, PBDEs

Testing item	Result (mg/kg)					
	3.	5.	7.	9.	14.	19.
Monobromobiphenyl (MonoBB)	N.D.	N.D.	N.D.	N.D.	N.D.	N.D.
Dibromobiphenyl (DiBB)	N.D.	N.D.	N.D.	N.D.	N.D.	N.D.
Tribromobiphenyl (TriBB)	N.D.	N.D.	N.D.	N.D.	N.D.	N.D.
Tetrabromobiphenyl (TetraBB)	N.D.	N.D.	N.D.	N.D.	N.D.	N.D.
Pentabromobiphenyl (PentaBB)	N.D.	N.D.	N.D.	N.D.	N.D.	N.D.
Hexabromobiphenyl (HexaBB)	N.D.	N.D.	N.D.	N.D.	N.D.	N.D.
Heptabromobiphenyl (HeptaBB)	N.D.	N.D.	N.D.	N.D.	N.D.	N.D.
Octabromobiphenyl (OctaBB)	N.D.	N.D.	N.D.	N.D.	N.D.	N.D.
Nonabromobiphenyl (NonaBB)	N.D.	N.D.	N.D.	N.D.	N.D.	N.D.
Decabromobiphenyl (DecaBB)	N.D.	N.D.	N.D.	N.D.	N.D.	N.D.
Sum of polybrominated biphenyls (PBBs)	N.D.	N.D.	N.D.	N.D.	N.D.	N.D.
Monobromodiphenyl ether (MonoBDE)	N.D.	N.D.	N.D.	N.D.	N.D.	N.D.
Dibromodiphenyl ether (DiBDE)	N.D.	N.D.	N.D.	N.D.	N.D.	N.D.
Tribromodiphenyl ether (TriBDE)	N.D.	N.D.	N.D.	N.D.	N.D.	N.D.
Tetrabromodiphenyl ether (TetraBDE)	N.D.	N.D.	N.D.	N.D.	N.D.	N.D.
Pentabromodiphenyl ether (PentaBDE)	N.D.	N.D.	N.D.	N.D.	N.D.	N.D.
Hexabromodiphenyl ether (HexaBDE)	N.D.	N.D.	N.D.	N.D.	N.D.	N.D.
Heptabromodiphenyl ether (HeptaBDE)	N.D.	N.D.	N.D.	N.D.	N.D.	N.D.
Octabromodiphenyl ether (OctaBDE)	N.D.	N.D.	N.D.	N.D.	N.D.	N.D.
Nonabromodiphenyl ether (NonaBDE)	N.D.	N.D.	N.D.	N.D.	N.D.	N.D.
Decabromodiphenyl ether (DecaBDE)	29	N.D.	N.D.	N.D.	N.D.	N.D.
Sum of polybrominated diphenyl ethers (PBDEs)	29	N.D.	N.D.	N.D.	N.D.	N.D.

Remark: N.D. = Not Detected, MDL = Method Detection Limit
 mg/kg = ppm = parts per million, 1000 mg/kg = 0.1%
 IN= Uncertain, Further chemical test, X = The range of needing to do further testing
 N/A= Not applicable
 BL = Under the screening limit
 OL = Further chemical test will be conducted while the result is above the screening limit.
 * = The screened result was found by XRF and further chemical test was suggested
 When conducting the test for PBBs&PBDEs, XRF was introduced to screen Br
 Exclusively; When conducting the test for Hexavalent Chromium, XRF was introduced to
 screen Chromium exclusively.

TEST REPORT



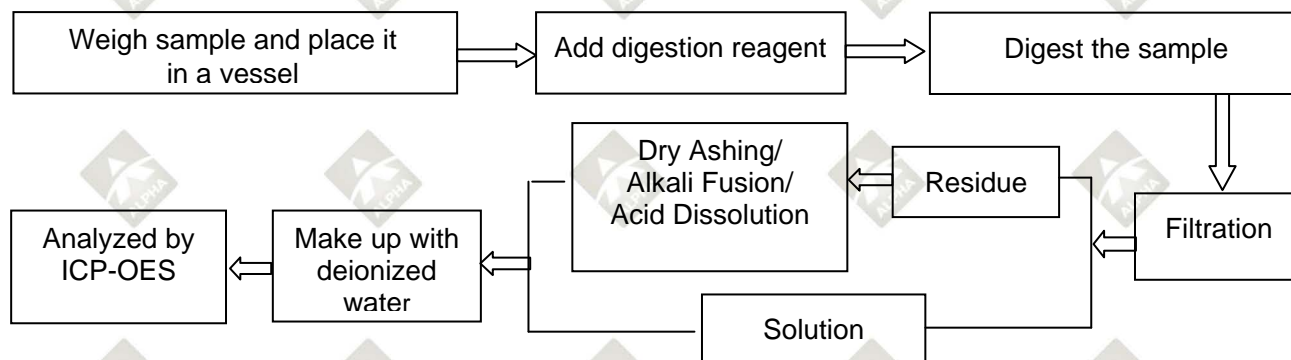
Report No.: T1881700 02 REV1

Date: January 09, 2018

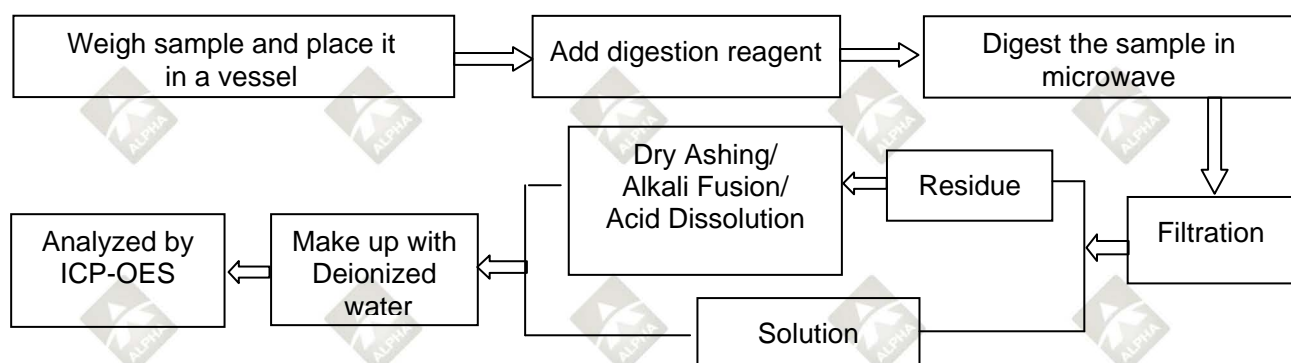
Page 6 of 8

Test Process

1. Lead(Pb), Cadmium(Cd), Chromium(Cr)

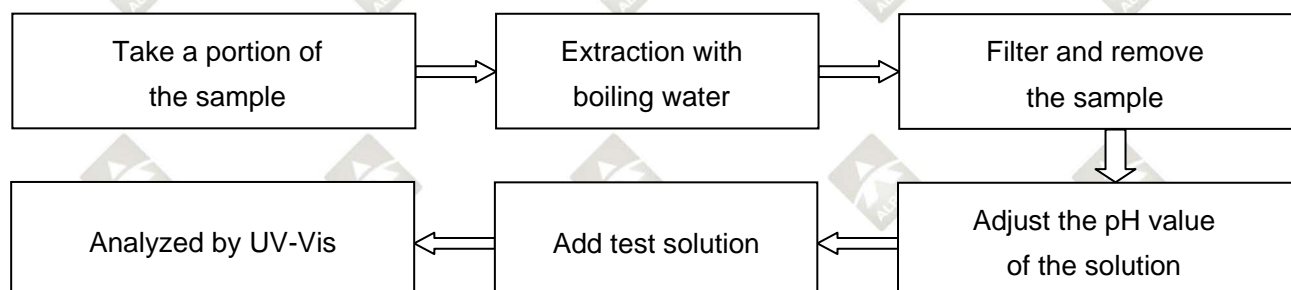


2. Mercury(Hg)



3. Hexavalent Chromium (Cr (VI))

(1) IEC 62321-7-1:2015 Plating/Metal sample(s)



TEST REPORT

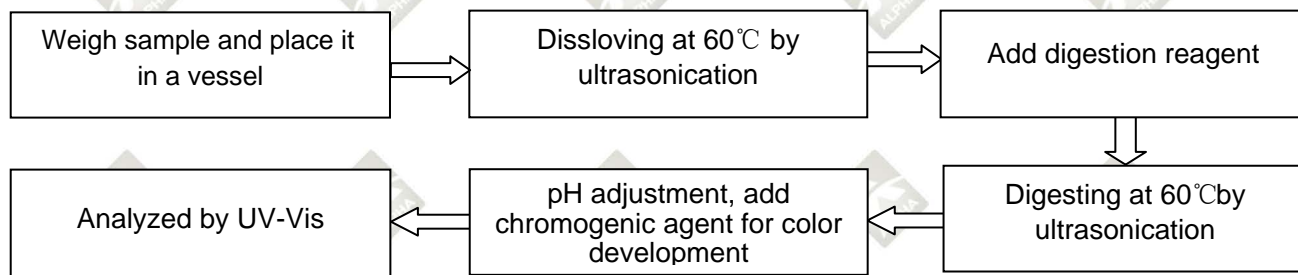


Report No.: T1881700 02 REV1

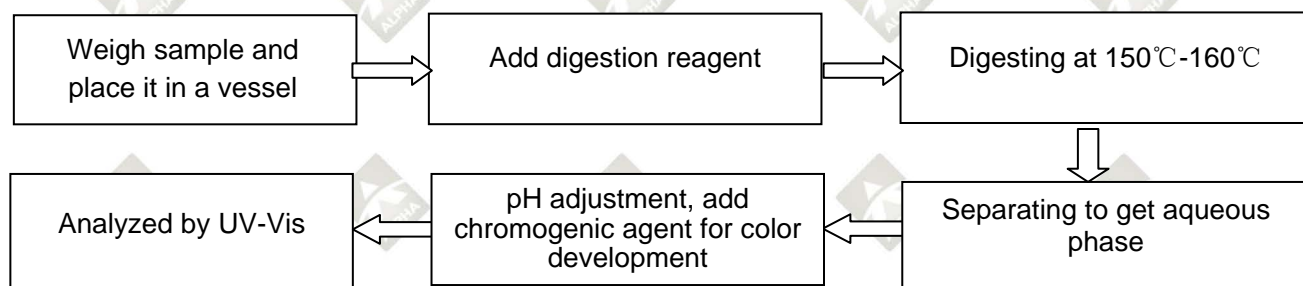
Date: January 09, 2018

Page 7 of 8

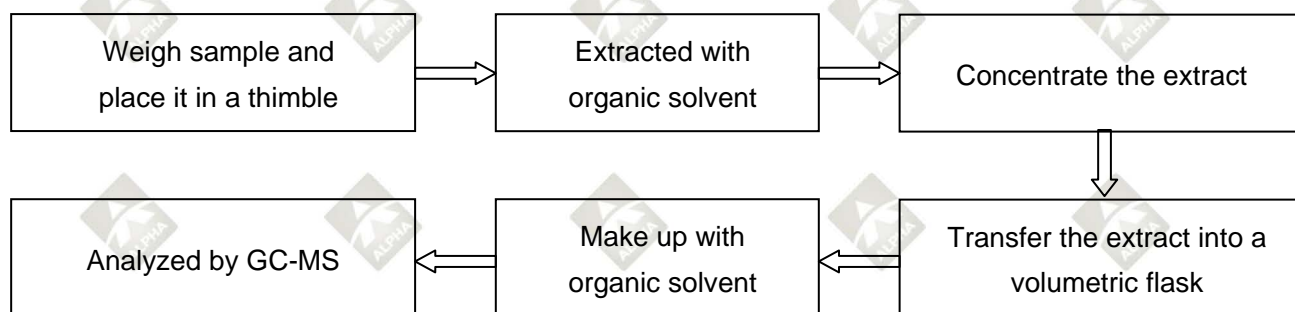
(2) IEC 62321-7-2:2017 Non-metal sample(s) (Material ABS/PC/PVC)



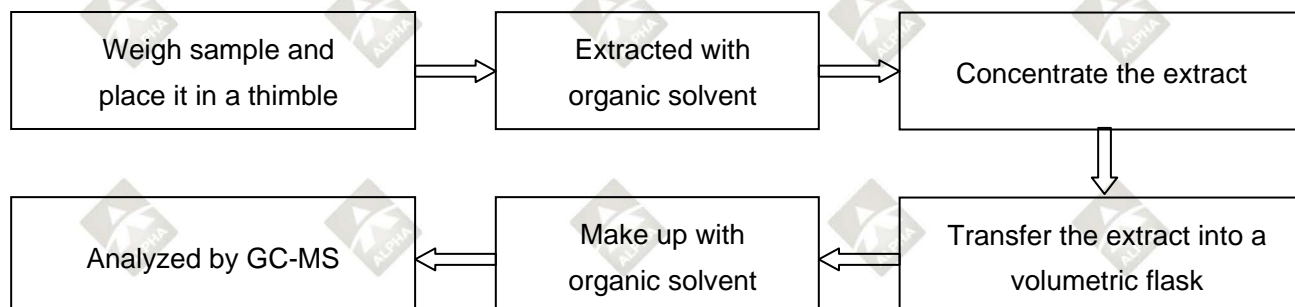
(3) IEC 62321-7-2:2017 Non-metal sample(s) (Others)



4. Polybrominated Biphenyls (PBBs), Polybrominated Diphenyl Ethers (PBDEs)



5. Phthalates(DBP/BBP/DEHP/DIBP)



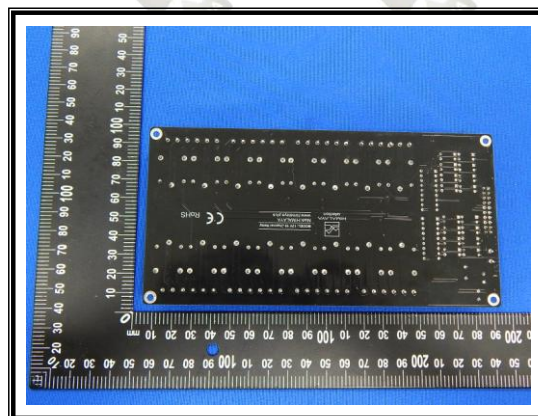
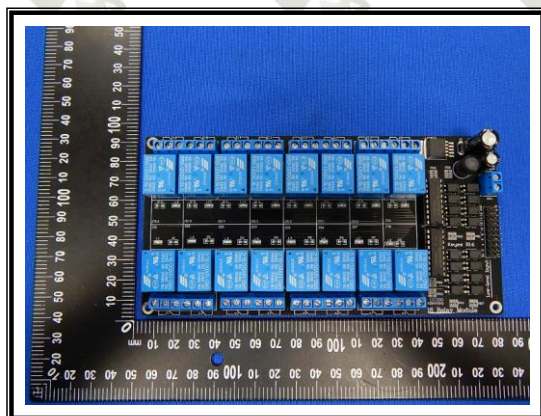
TEST REPORT

Report No.: T1881700 02 REV1

Date: January 09, 2018

Page 8 of 8

Tested sample photo(s)



--- End of report ---

Statement:

1. The sample(s) and sample Information was/were provided by the client who should be responsible for the authenticity which ALPHA hasn't verified;
2. The result(s) shown in this report refer(s) only to the sample(s) tested;
3. Without written approval of ALPHA, this report can't be reproduced except in full.
4. **Modification Version Number to (REV1)**

The original Test Report Ref. No.T1881700 02(REV0) dated November 23, 2018 was modified on January 09, 2019 due to include the following changes

modifications:

- Modify only the model
- No further test need