



TEST REPORT

Report No.: T1881716 02REV1

Date: January 09, 2019

Page 1 of 7

Applicant: Shenzhen KEYES DIY Robot co., Ltd
Address: Room9A Jingxing Building, Changyong Road, Long Hua Xin Qu District, Shenzhen, China.

The following sample(s) and sample information was/were submitted and identified by/on the behalf of the client:

Sample Name	Four way relay -5V (black)
Model No.	HIM01013
Trademark	HIMALAYA
Supplier	Shenzhen KEYES DIY Robot co., Ltd
Sample Received Date	November 14, 2018
Testing Period	November 14 – 26, 2018
Test Method & Test Result	Please refer to following pages.

Test Requested

As specified by client, according to RoHS Directive 2011/65/EU with amendment (EU) 2015/863 to test Lead (Pb), Cadmium (Cd), Mercury (Hg), Hexavalent Chromium(Cr(VI)), Polybrominated Biphenyls(PBBs), Polybrominated Diphenyl Ethers(PBDEs), Phthalates(DBP, BBP, DEHP, DIBP) in the submitted sample(s).

Result

Pass

Tested by:

Shayan Zhang

Approved by:

Tong Geng

Reviewed by:

Anne Zhao

Date of issue:

January 09, 2019



TEST REPORT



Report No.: T1881716 02REV1

Date: January 09, 2019

Page 2 of 7

Test Method

(1) Screening limits for regulated elements according to IEC 62321-3-1:2013 (Unit: mg/kg)

Element	Polymers	Metals	Composite material
Pb	$BL \leq (700-3\sigma) < X < (1300+3\sigma) \leq OL$	$BL \leq (700-3\sigma) < X < (1300+3\sigma) \leq OL$	$BL \leq (500-3\sigma) < X < (1500+3\sigma) \leq OL$
Cd	$BL \leq (70-3\sigma) < X < (130+3\sigma) \leq OL$	$BL \leq (70-3\sigma) < X < (130+3\sigma) \leq OL$	$LOD < X < (150+3\sigma) \leq OL$
Hg	$BL \leq (700-3\sigma) < X < (1300+3\sigma) \leq OL$	$BL \leq (700-3\sigma) < X < (1300+3\sigma) \leq OL$	$BL \leq (500-3\sigma) < X < (1500+3\sigma) \leq OL$
Cr	$BL \leq (700-3\sigma) < X$	$BL \leq (700-3\sigma) < X$	$BL \leq (500-3\sigma) < X$
Br	$BL \leq (300-3\sigma) < X$	N/A	$BL \leq (250-3\sigma) < X$

(2) Screening limits for Phthalates

Test Item(s)	Screening limits(Unit: mg/kg)
Dibutyl phthalate(DBP)	$BL \leq 600 < X$
Benzylbutyl phthalate(BBP)	$BL \leq 600 < X$
Di-2-ethylhexyl phthalate(DEHP)	$BL \leq 600 < X$
Diisobutyl phthalate(DIBP)	$BL \leq 600 < X$

(3) Chemical Test

Test Item	Test Method	Test Instrument	MDL (mg/kg)	EU RoHS Limit (mg/kg)
Lead (Pb)	IEC 62321-5:2013	ICP-OES	2	1000
Cadmium (Cd)	IEC 62321-5:2013	ICP-OES	2	100
Mercury (Hg)	IEC 62321-4:2013+AMD1:2017	ICP-OES	2	1000
Hexavalent Chromium (Cr(VI))	IEC 62321-7-2:2017 (non-metal)	UV-Vis	8	1000
	IEC 62321-7-1:2015 (metal)	UV-Vis	0.1($\mu\text{g}/\text{cm}^2$)	/
Polybrominated Biphenyls (PBBs)	IEC 62321-6:2015	GC-MS	5	1000
Polybrominated Diphenyl Ethers (PBDEs)	IEC 62321-6:2015	GC-MS	5	1000
Phthalates(DBP, BBP, DEHP, DIBP)	IEC 62321-8:2017	GC-MS	50	1000

Remark:
 BL = Under the screening limit
 OL = Above the screening limit
 X = The range of needing to do further testing
 3 σ = The reproducibility of analytical instruments
 N/A = Not applicable
 LOD = Detection limit



TEST REPORT

Report No.: T1881716 02REV1

Date: January 09, 2019

Page 3 of 7

Tested Sample/Part Description

No.	Component Description	No.	Component Description
1.	Black plastic block	9.	PCB
2.	Blue plastic of relay	10.	White plastic in relay
3.	Chip resistor	11.	Copper coil in relay
4.	Triode	12.	Silvery metal in relay
5.	Chip LED	13.	Copper metal sheet in relay
6.	IC	14.	Blue plastic shell of connector
7.	Crystal diode	15.	Silvery metal in connector
8.	Tin on PCB	16.	Silvery metal screw in connector

Tested Result

(1) Screening Result

Tested Item(s)	Screening Result									
	1	2	3	4	5	6	7	8	9	10
Lead (Pb)	BL	BL	BL	BL	BL	BL	OL ^{<1>}	BL	BL	BL
Cadmium (Cd)	BL	BL	BL	BL	BL	BL	BL	BL	BL	BL
Mercury (Hg)	BL	BL	BL	BL	BL	BL	BL	BL	BL	BL
Total Chromium (Cr(VI))	BL	BL	BL	BL	BL	BL	BL	BL	BL	BL
Total Bromine (PBBs & PBDEs)	X*	X*	BL	X*	BL	X*	BL	N/A	X*	X*
Dibutyl phthalate(DBP)	BL	BL	BL	BL	BL	BL	BL	N/A	BL	BL
Benzylbutyl phthalate(BBP)	BL	BL	BL	BL	BL	BL	BL	N/A	BL	BL
Di-2-ethylhexyl phthalate(DEHP)	BL	BL	BL	BL	BL	BL	BL	N/A	BL	BL
Diisobutyl phthalate(DIBP)	BL	BL	BL	BL	BL	BL	BL	N/A	BL	BL

Tested Item(s)	Screening Result					
	11	12	13	14	15	16
Lead (Pb)	BL	BL	BL	BL	BL	BL
Cadmium (Cd)	BL	BL	BL	BL	BL	BL
Mercury (Hg)	BL	BL	BL	BL	BL	BL
Total Chromium (Cr(VI))	BL	BL	BL	BL	BL	BL
Total Bromine (PBBs & PBDEs)	N/A	N/A	N/A	BL	N/A	N/A
Dibutyl phthalate(DBP)	N/A	N/A	N/A	BL	N/A	N/A
Benzylbutyl phthalate(BBP)	N/A	N/A	N/A	BL	N/A	N/A
Di-2-ethylhexyl phthalate(DEHP)	N/A	N/A	N/A	BL	N/A	N/A
Diisobutyl phthalate(DIBP)	N/A	N/A	N/A	BL	N/A	N/A

Shenzhen Alpha Product Testing Co., Ltd.

Building i, No.2, Lixin Road, Fuyong Street, Bao'an District, 518103, Shenzhen, Guangdong, China

TEST REPORT



Report No.: T1881716 02REV1

Date: January 09, 2019

Page 4 of 7

(2) Test result for Chemical Confirmation

(a) The test result of PBBs, PBDEs

Testing item	Result (mg/kg)					
	1.	2.	4.	6.	9.	10.
Monobromobiphenyl (MonoBB)	N.D.	N.D.	N.D.	N.D.	N.D.	N.D.
Dibromobiphenyl (DiBB)	N.D.	N.D.	N.D.	N.D.	N.D.	N.D.
Tribromobiphenyl (TriBB)	N.D.	N.D.	N.D.	N.D.	N.D.	N.D.
Tetrabromobiphenyl (TetraBB)	N.D.	N.D.	N.D.	N.D.	N.D.	N.D.
Pentabromobiphenyl (PentaBB)	N.D.	N.D.	N.D.	N.D.	N.D.	N.D.
Hexabromobiphenyl (HexaBB)	N.D.	N.D.	N.D.	N.D.	N.D.	N.D.
Heptabromobiphenyl (HeptaBB)	N.D.	N.D.	N.D.	N.D.	N.D.	N.D.
Octabromobiphenyl (OctaBB)	N.D.	N.D.	N.D.	N.D.	N.D.	N.D.
Nonabromobiphenyl (NonaBB)	N.D.	N.D.	N.D.	N.D.	N.D.	N.D.
Decabromobiphenyl (DecaBB)	N.D.	N.D.	N.D.	N.D.	N.D.	N.D.
Sum of polybrominated biphenyls (PBBs)	N.D.	N.D.	N.D.	N.D.	N.D.	N.D.
Monobromodiphenyl ether (MonoBDE)	N.D.	N.D.	N.D.	N.D.	N.D.	N.D.
Dibromodiphenyl ether (DiBDE)	N.D.	N.D.	N.D.	N.D.	N.D.	N.D.
Tribromodiphenyl ether (TriBDE)	N.D.	N.D.	N.D.	N.D.	N.D.	N.D.
Tetrabromodiphenyl ether (TetraBDE)	N.D.	N.D.	N.D.	N.D.	N.D.	N.D.
Pentabromodiphenyl ether (PentaBDE)	N.D.	N.D.	N.D.	N.D.	N.D.	N.D.
Hexabromodiphenyl ether (HexaBDE)	N.D.	N.D.	N.D.	N.D.	N.D.	N.D.
Heptabromodiphenyl ether (HeptaBDE)	N.D.	N.D.	N.D.	N.D.	N.D.	N.D.
Octabromodiphenyl ether (OctaBDE)	N.D.	N.D.	N.D.	N.D.	N.D.	N.D.
Nonabromodiphenyl ether (NonaBDE)	N.D.	N.D.	N.D.	N.D.	N.D.	N.D.
Decabromodiphenyl ether (DecaBDE)	N.D.	N.D.	N.D.	N.D.	N.D.	N.D.
Sum of polybrominated diphenyl ethers (PBDEs)	N.D.	N.D.	N.D.	N.D.	N.D.	N.D.

Remark: N.D. = Not Detected, MDL = Method Detection Limit
mg/kg = ppm = parts per million, 1000 mg/kg = 0.1%
IN= Uncertain, Further chemical test, X = The range of needing to do further testing
N/A= Not applicable
BL = Under the screening limit, OL =Above the screening limit.
* = The screened result was found by XRF and further chemical test was suggested
When conducting the test for PBBs&PBDEs, XRF was introduced to screen Br
Exclusively; When conducting the test for Hexavalent Chromium, XRF was introduced to
screen Chromium exclusively.
¹: According to the declaration from the client, Lead (Pb) in the sample is exempted by
EU RoHS Directive 2011/65/EU based on 7(c)" Electrical and electronic components
containing lead in a glass or ceramic other than dielectric ceramic in capacitors, e.g.
piezoelectronic devices, or in a glass or ceramic matrix compound"

Shenzhen Alpha Product Testing Co., Ltd.

Building i, No.2, Lixin Road, Fuyong Street, Bao'an District, 518103, Shenzhen, Guangdong, China



TEST REPORT

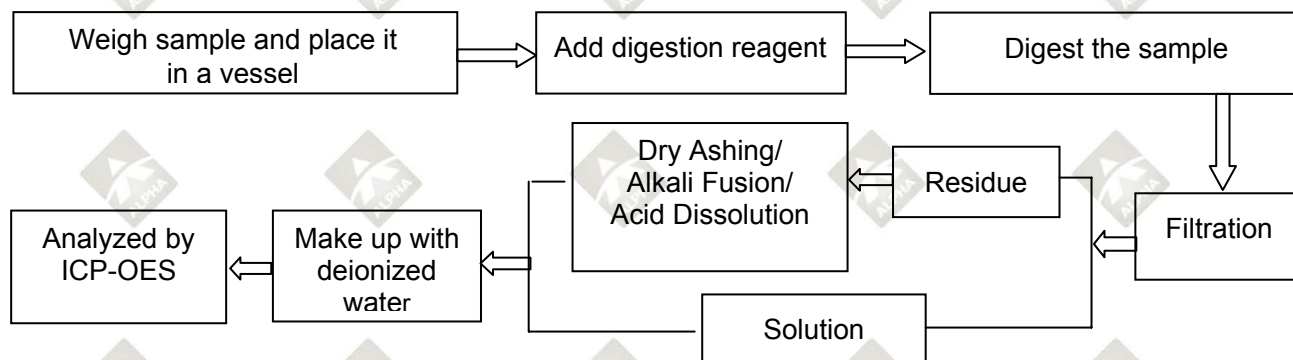
Report No.: T1881716 02REV1

Date: January 09, 2019

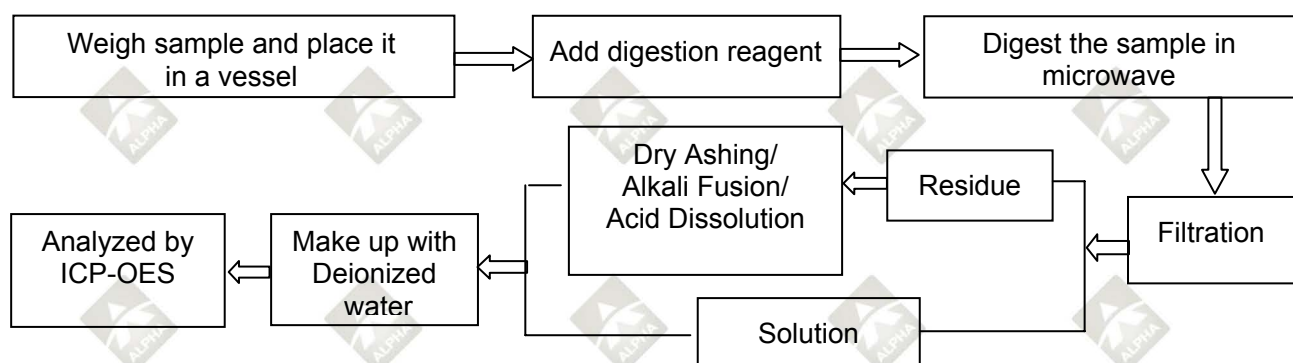
Page 5 of 7

Test Process

1. Lead(Pb), Cadmium(Cd), Chromium(Cr)

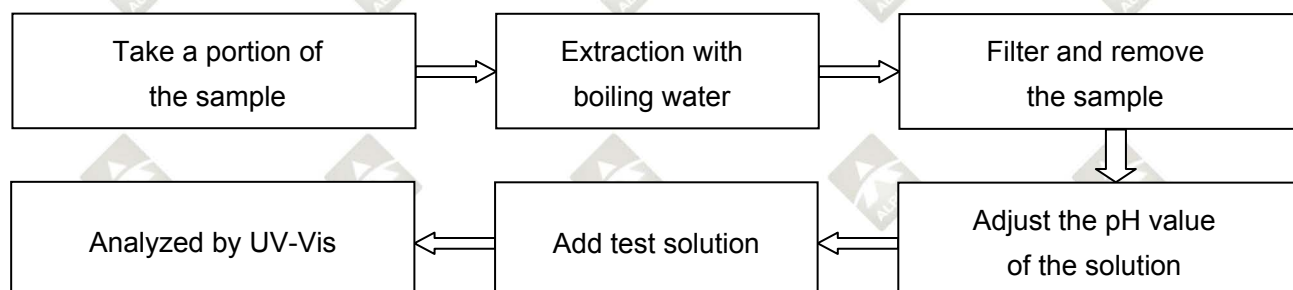


2. Mercury(Hg)



3. Hexavalent Chromium (Cr (VI))

(1) IEC 62321-7-1:2015 Plating/Metal sample(s)





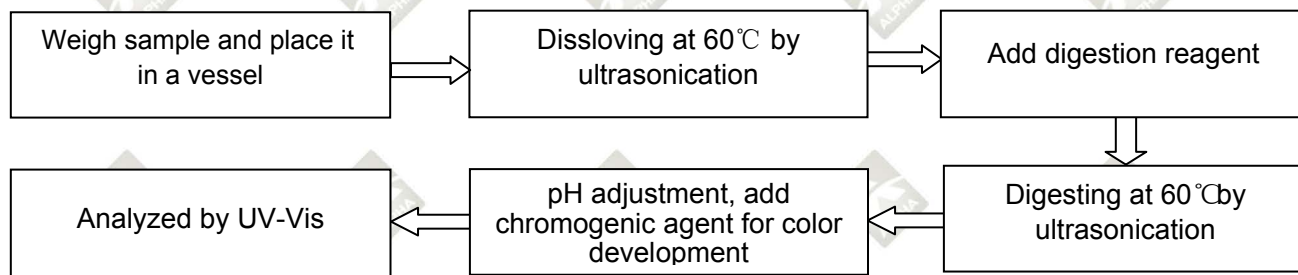
TEST REPORT

Report No.: T1881716 02REV1

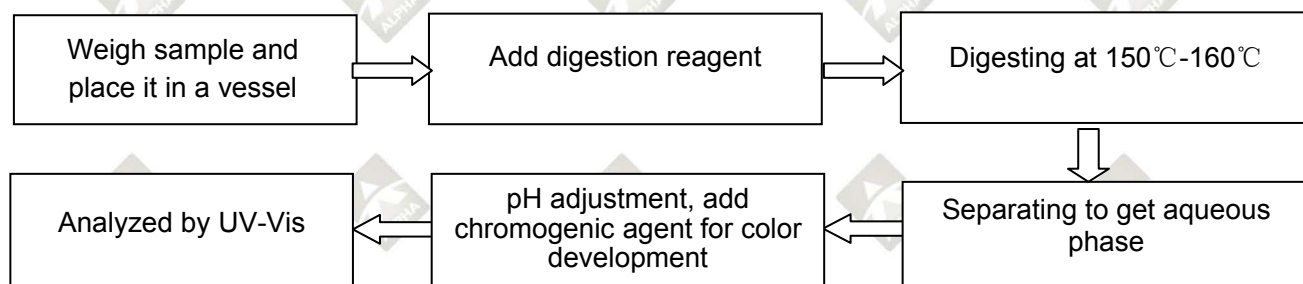
Date: January 09, 2019

Page 6 of 7

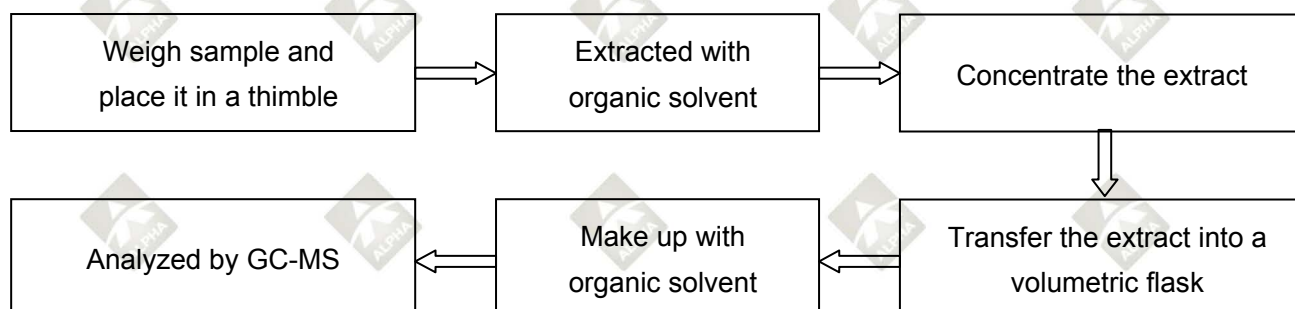
(2) IEC 62321-7-2:2017 Non-metal sample(s) (Material ABS/PC/PVC)



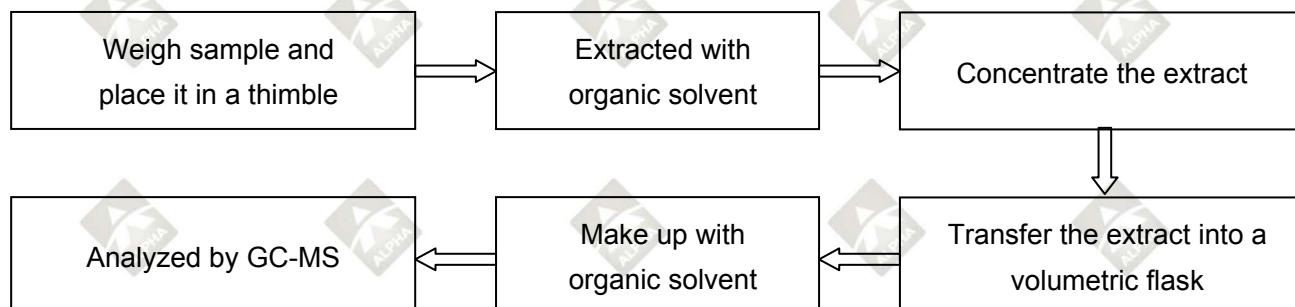
(3) IEC 62321-7-2:2017 Non-metal sample(s) (Others)



4. Polybrominated Biphenyls (PBBs), Polybrominated Diphenyl Ethers (PBDEs)



5. Phthalates(DBP/BBP/DEHP/DIBP)



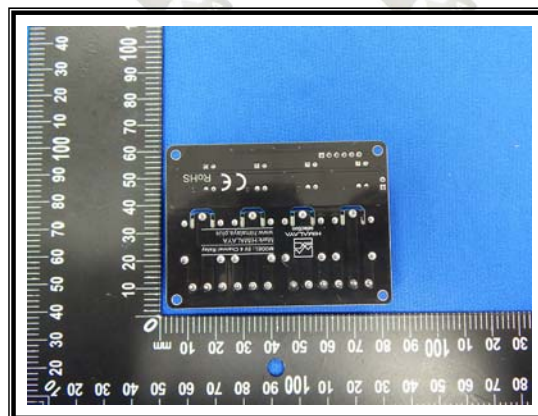
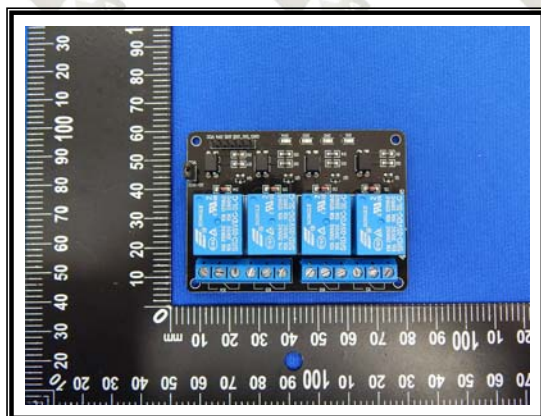
TEST REPORT

Report No.: T1881716 02REV1

Date: January 09, 2019

Page 7 of 7

Tested sample photo(s)



--- End of report ---

Statement:

1. The sample(s) and sample Information was/were provided by the client who should be responsible for the authenticity which ALPHA hasn't verified;
2. The result(s) shown in this report refer(s) only to the sample(s) tested;
3. Without written approval of ALPHA, this report can't be reproduced except in full.
4. Modification Version Number to (REV1).

The original Test Report No.T1881716 02(REV0) dated November 26, 2018 was modified on January 09, 2019 due to include the following changes and/or additions modifications:

-Change Model No. to"HIM01013"..