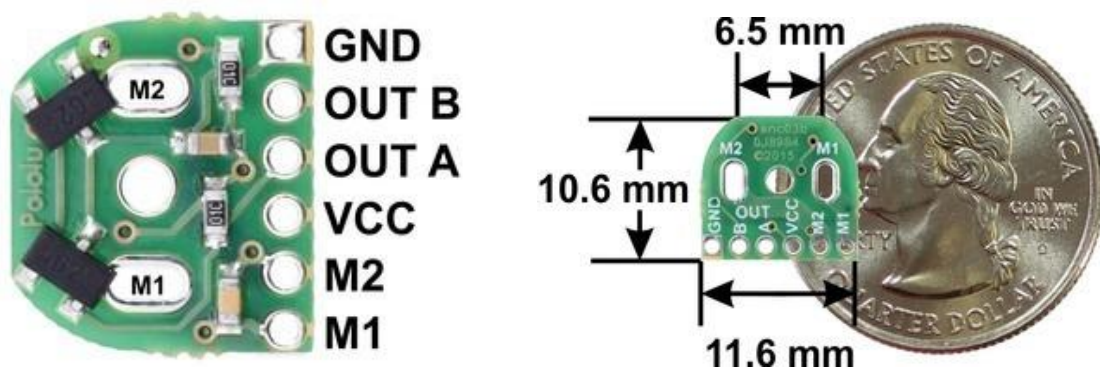


POLOLU MAGNETIC ENCODER PAIR KIT FOR
MICRO METAL GEARMOTORS, 12 CPR, 2.7-18V
(HPCB COMPATIBLE)

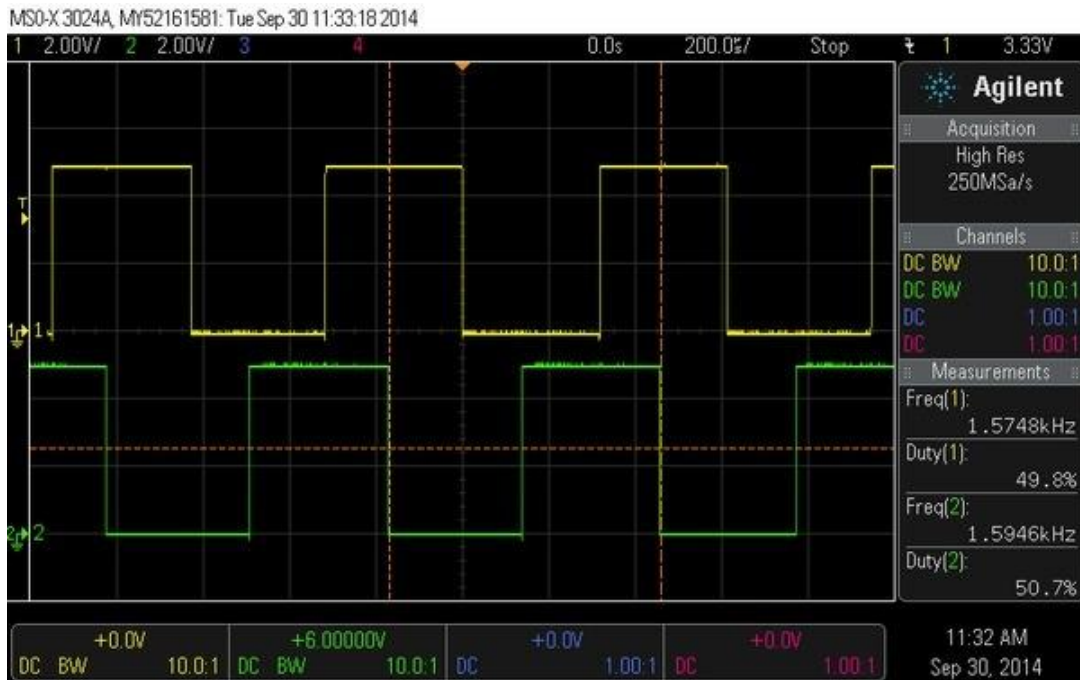
USER'S GUIDE

PINOUT AND INSTALLATION

The encoder board is designed to be soldered directly to the back of the motor, with the back shaft of the motor protruding through the hole in the middle of the circuit board. One way to achieve good alignment between the board and the motor is to tack down the board to one motor pin and to solder the other pin only when the board is flat and well aligned. Be careful to avoid prolonged heating of the motor pins, which could deform the plastic end cap of the motor or the motor brushes. Once the board is soldered down to the two terminals, the motor leads are connected to the M1 and M2 pads along the edge of the board; the remaining four pads are used to power the sensors and access the two quadrature outputs:



The sensors are powered through the VCC and GND pins. VCC can be 2.7 V to 18 V, and the quadrature outputs A and B are digital signals that are either driven low (0 V) by the sensors or pulled to VCC through 10 k Ω pull-up resistors, depending on the applied magnetic field. The sensors' comparators have built-in hysteresis, which prevents spurious signals in cases where the motor stops near a transition point.



Encoder A and B outputs of a magnetic encoder on a high-power (HP) micro metal gearmotor running at 6 V.

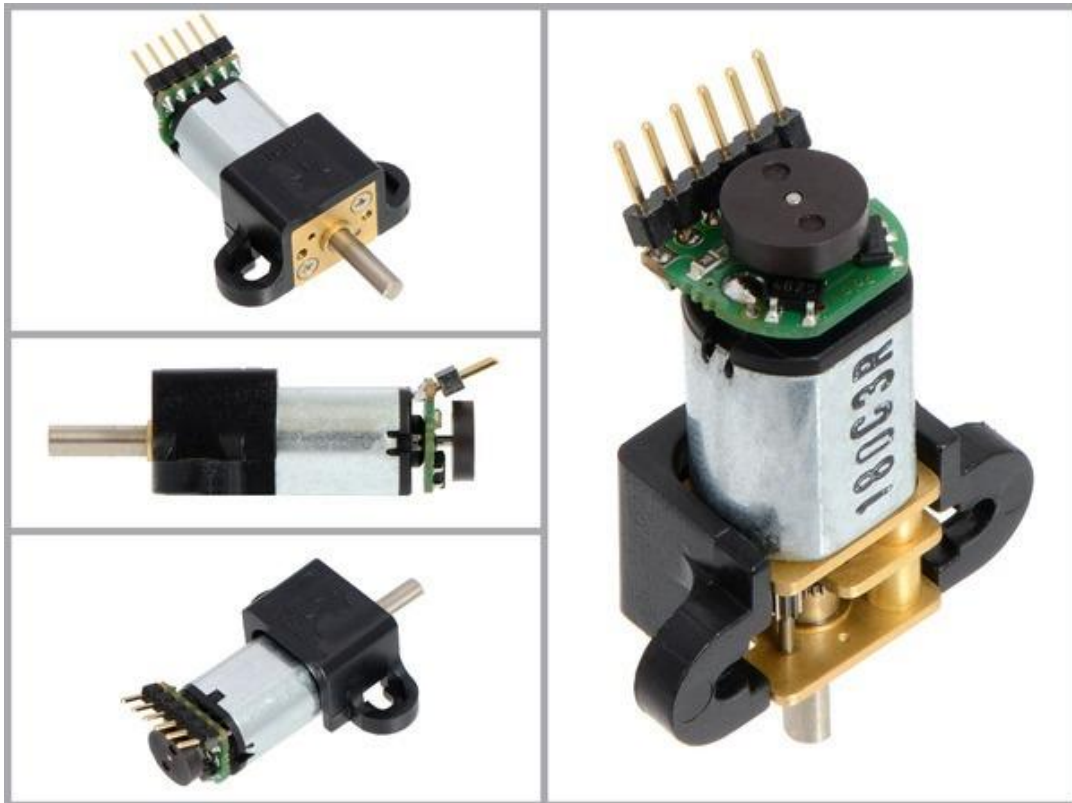
The board's six pads have a 2 mm pitch, so they do not work with common 0.1" connectors. One option for connecting to the board is to solder in individual wires, such as in the example below:



Alternatively, you can solder a 2mm-pitch connector to the board. The examples below show a male header, which gives you the option of making a detachable cable terminated by a 6-pin 2mm-pitch female header. If the pins are angled over the motor, as shown in the picture below, they will just barely protrude through the holes in the board. Note that in this orientation, there is room to plug in a female header even when our extended micro metal gearmotor bracket is being used.

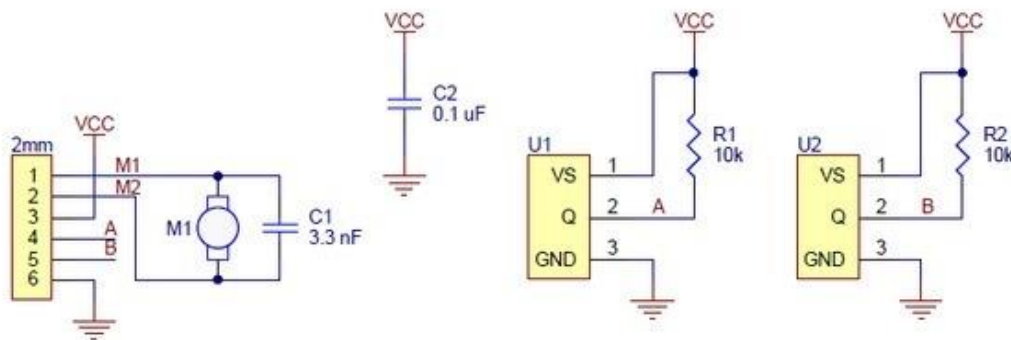


If the pins are pointed away from the motor, they will need to be angled so that they sufficiently clear the magnetic disc. With a decent soldering iron, it is possible to solder them in this orientation even after the encoder has been installed on the motor.



Once the board is soldered to the motor, the magnetic encoder disc can be pushed onto the motor shaft. One easy way to accomplish this is to press the motor onto the disc while it is sitting on a flat surface, pushing until the shaft makes contact with that surface. The size of the gap between the encoder disc and the sensor board does not have a big impact on performance as long as the motor shaft is at least all the way through the disc.

SCHEMATIC DIAGRAM

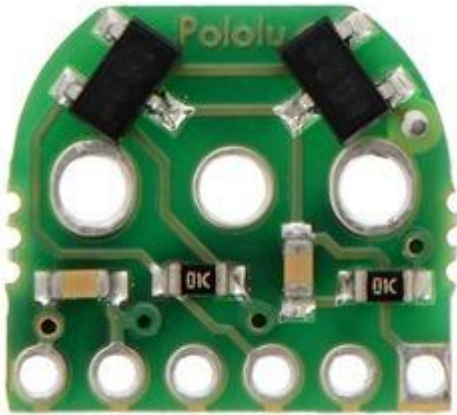


Note: U1 and U2 are Hall Effect sensor ICs in SOT-23 packages, e.g. TLE4946-2K.

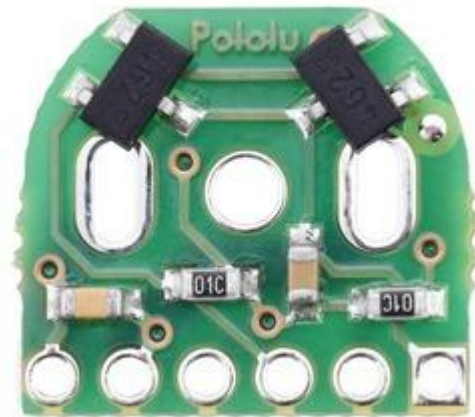
This schematic is also available as a downloadable pdf (125k pdf).

COMPARISON TO PREVIOUS VERSION

This encoder version is a minor alteration to the previous version that just enlarges the motor terminal holes so they can accommodate the larger terminals on the HPCB versions of our micro metal gearmotors. The two encoder versions are otherwise identical, and this new one can serve as a drop-in replacement for the previous one. The following two pictures show a side-by-side comparison of the old version (left) and the new one (right):



Magnetic Encoder Kit for Micro Metal Gearmotors (old version; not compatible with HPCB micro metal gearmotors).



Magnetic Encoder Kit for Micro Metal Gearmotors (HPCB compatible).