

Micro DC-Motor Modellspezifikationen

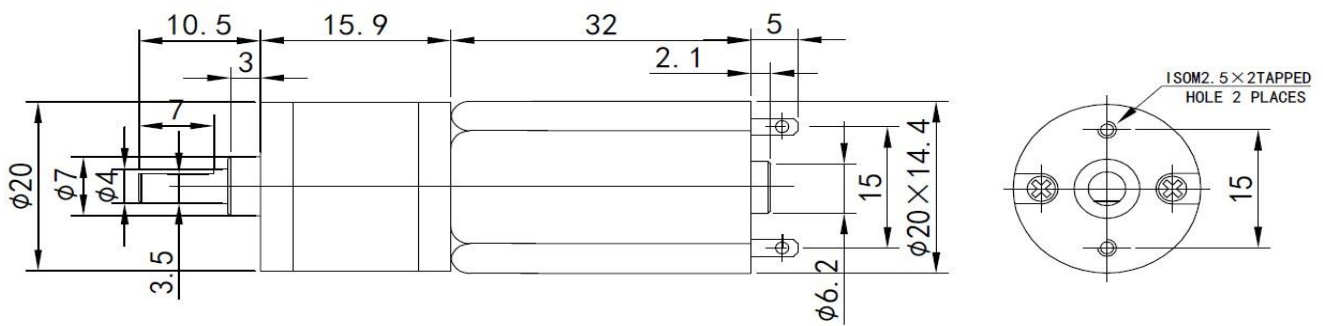


| Produkt-Modell : VT-X-G20A-06-400 | | | |
|--|-------------------------------------|------------------------------|--------------------------|
| 1. Standard-Betriebsbedingungen (Standard Operating Conditions) | | | |
| NO. | Item | Specification | Test Method |
| 1,1 | Nennspannung (Rated Voltage) | DC 6.0V | Multimeter |
| 1,2 | Verhältnis (Gear Ratio) | 25:1 | |
| 1,3 | Drehungsrichtung (Rotation) | CW&CCW | Handle |
| 1,4 | Motor Position | All position in horizontal | Handle |
| 1,5 | Test Temperature | 0 Degree - 30 Degree Celsius | Thermometer |
| 1,6 | Test Humidity | 30% ~ 95% | Hygroscope |
| 2. Motorleistung (Performance Of Motors) | | | |
| NO. | Item | Specification | Test Method |
| 2,1 | Leerlaufdrehzahl (No-load Speed) | 10500±10%rpm | Flash Speed Indicator |
| 2,2 | Leerlaufstrom (No-load Current) | 80mA(Max) | DC Power Supply |
| 2,3 | Stall Strom (Stall Current) | 2500mA(Max) | DC Power Supply |
| 2,4 | Stall Moment (Stall Torque) | 8,34mNm | Torque Measure |
| 3. Gesamtleistung (Performance of Gear motors) | | | |
| NO. | Item | Specification | Test Method |
| 3,1 | Drehzahl (Output Speed) | 400±10%rpm | Flash Speed Indicator |
| 3,2 | Leerlauf Strom (No-load Current) | 100mA(Max) | DC Power Supply |
| 3,3 | Stall Strom (Stall Current) | 2500mA(Max) | DC Power Supply |
| 3,4 | Stall Moment (Stall Torque) | 176,53mNm | Torque Measure |
| 3,5 | Last Moment (Rated Torque) | 31,38mNm | Torque Measure |
| 3,6 | Last Strom (Rated Current) | 420mA(Max) | DC Power Supply |
| 3,7 | Lastdrehzahl (Rated Speed) | 310±10%rpm | Flash Speed Indicator |
| 3,8 | Geräuschangaben 30CM (Noise) | 56dB | Digital Sound Levd Meter |
| 4. Dimension(The Dimension) | | | |
| NO. | Item | Specification | Test Method |
| 4,1 | The Outside Shaft Length | 10.5mm | Vernier Calipers |
| 4,2 | Axial Spiel (Shaft End Play) | 0.05-0.50mm | Frock |
| 4,3 | Schraubengröße (Screw Size) | M2.5 | Frock |
| 4,4 | Gewicht (weight) | 53g | Weigh |
| 4,5 | Durchmesser der Welle(Dia.of shaft) | 10.5mmD7.0 | Vernier Calipers |
| 4,6 | Outline Mounting Dimension | Refer to the Outline Drawing | Calipe |

5. Produktbilder (The product photos)



6. Produktzeichnungen (Product drawings)



7. Diagramm (Curve drawings)

