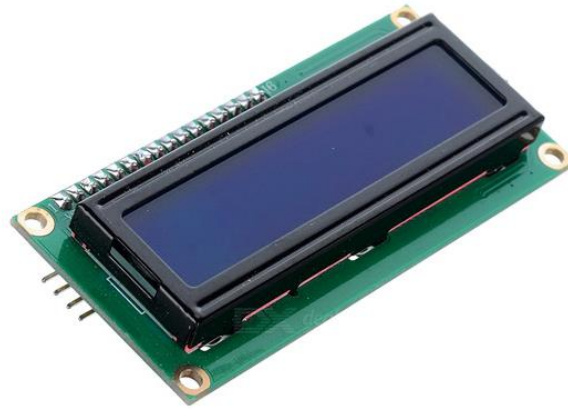


## Keyestudio 1602 I2C Module



### Introduction

keyestudio 1602 I2C module is a 16 character by 2 line LCD display with Blue background and White backlight.

The original 1602 LCD needs 7 IO ports to be up and running, but ours is built with Arduino IIC/I2C interface, saving you 5 IO ports.

This LCD is ready-to-use because it is compatible with the Arduino Liquid Crystal Library.

LCDs are great for printing data and showing values. Adding an LCD to your project will make it super portable and allow you to integrate up to 32 characters (16x2) of information.

On the back of LCD display there is a blue potentiometer. You can turn the potentiometer to adjust the contrast.

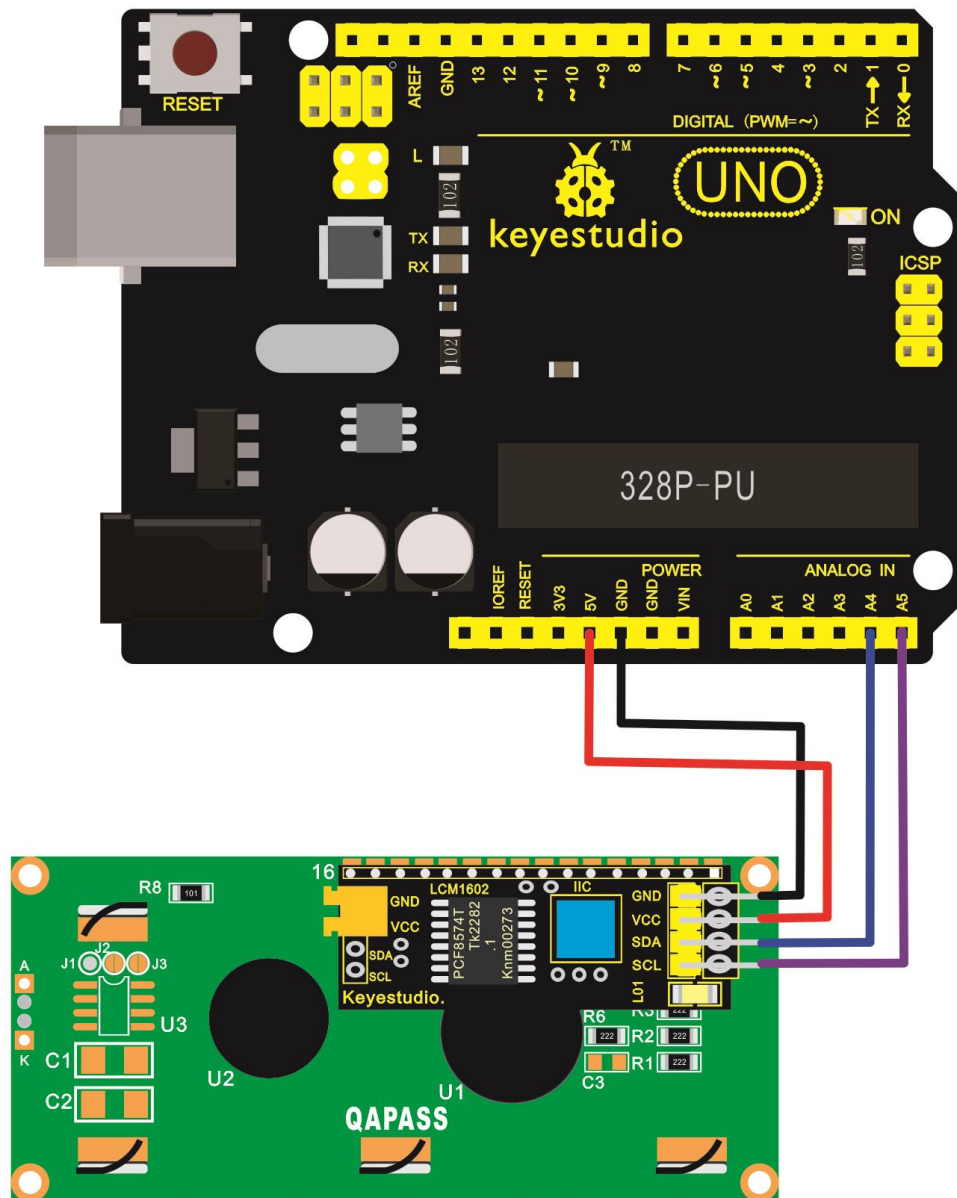
Notice that the screen will get brighter or darker and that the characters



## Connection Diagram

I602 is equipped with 4 pins in total. SCL should be connected to Analog 5, SDA to Analog 4, VCC to +5V and GND to ground.

Below is connection diagram for your reference:



## Sample Code

```
*****  
  
#include <Wire.h>  
  
#include <LiquidCrystal_I2C.h>  
  
LiquidCrystal_I2C lcd(0x27,16,2); // set the LCD address to 0x27 for a  
16 chars and 2 line display  
  
void setup()  
{  
  
  lcd.init(); // initialize the lcd  
  
  lcd.init();  
  
  // Print a message to the LCD.  
  
  lcd.backlight();  
  
  lcd.setCursor(3,0);  
  
  lcd.print("Hello, world!");  
  
  lcd.setCursor(2,1);  
  
  lcd.print("keyestudio!");  
  
}  
  
void loop()  
{  
  
}  
  
*****
```

## What You Will See:

Hookup well and upload the code to board, you should see the words “Hello, World!” and “keyestudio” pop up on your LCD.

Remember you can adjust the contrast using the potentiometer if you can't make out the words clearly.



If you have any issues, make sure your code is correct and double-check your connections.