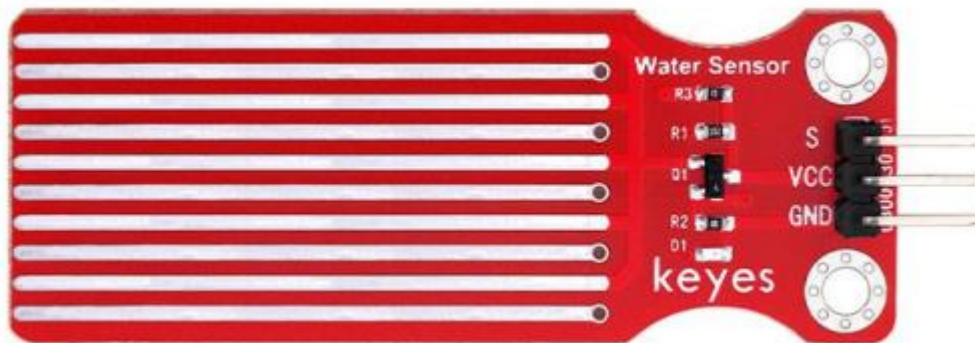




KE0037 Keyes Water Level Sensor (Pad Hole) Red And Eco-friendly



Introduction

Compatible with the arduino sensor shield ,this sensor is an easy-to-use, cost-effective water level / water droplet recognition & detection sensor, therefore the water level can be judged by measuring water droplet / water volume via a series of exposed parallel wire traces. Its 2 positioning holes make it fixed on the other devices easier.

Specifications:

Working voltage: 3.3V-5V (DC)

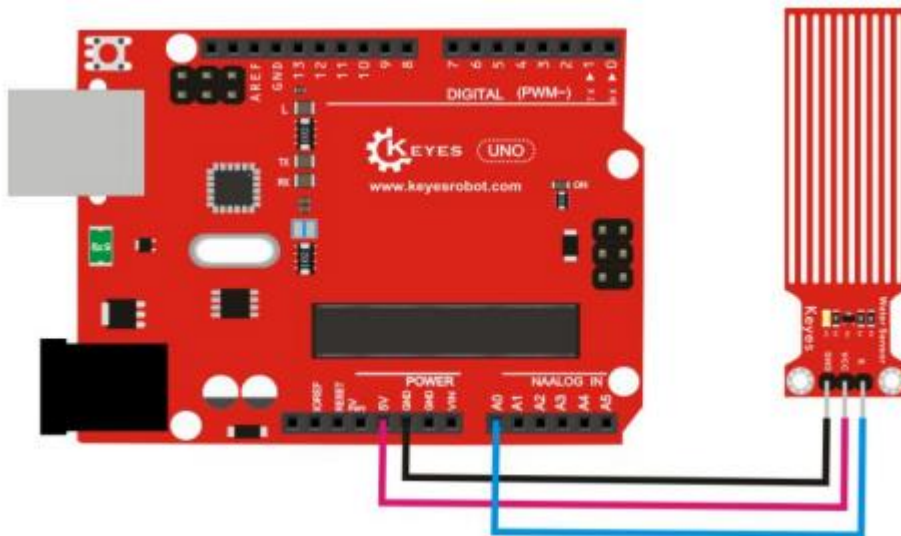
Interface: 3PIN interface

Output signal: analog signal

Weight: 4g



Connection Diagram:



Test Code

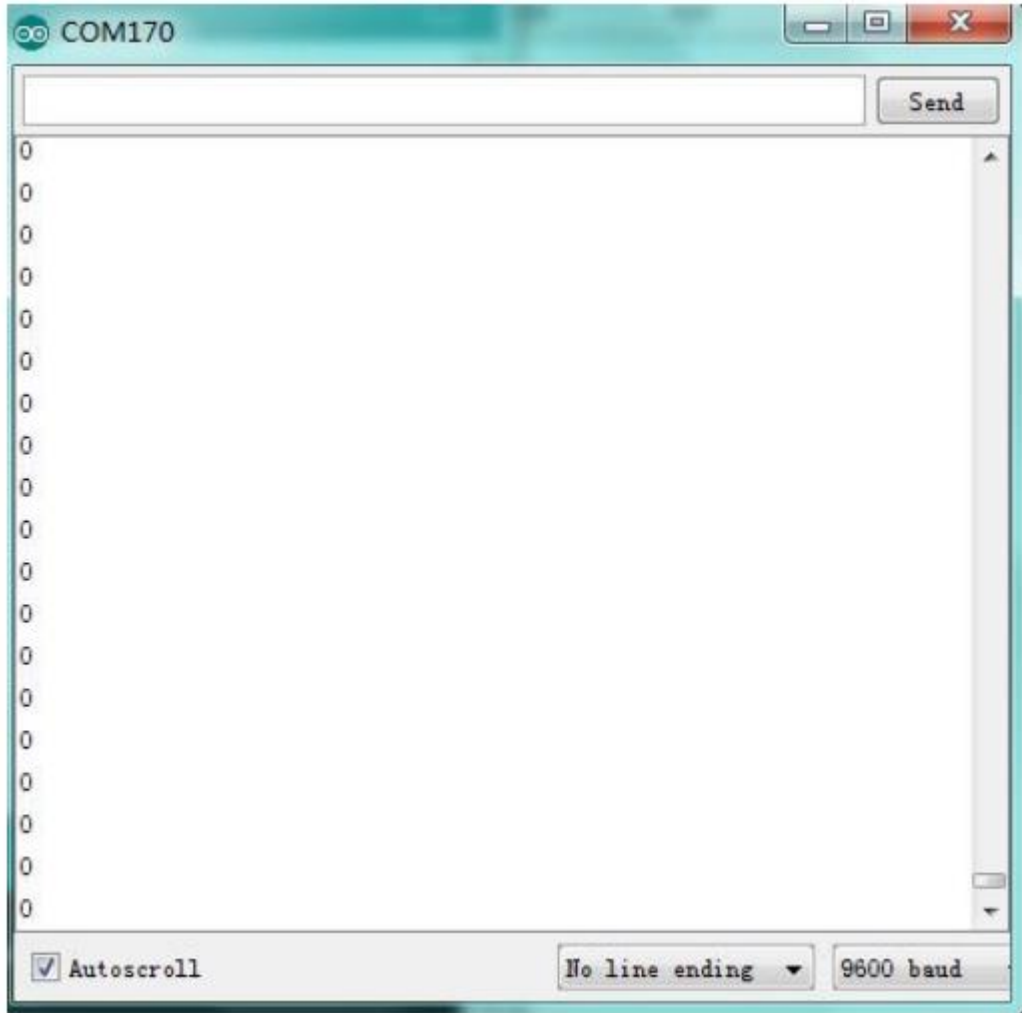
```
void setup() {  
  Serial.begin(9600); //Set the baud rate}  
  
  void loop() {  
  
    int sensorValue = analogRead(A0); //Read the A0 value and assign value to a digital  
    variable "sensorValue"  
  
    Serial.println(sensorValue, DEC); //show the sensorValue value, and auto  
    wrap  
  
  }  
}
```

Test Result

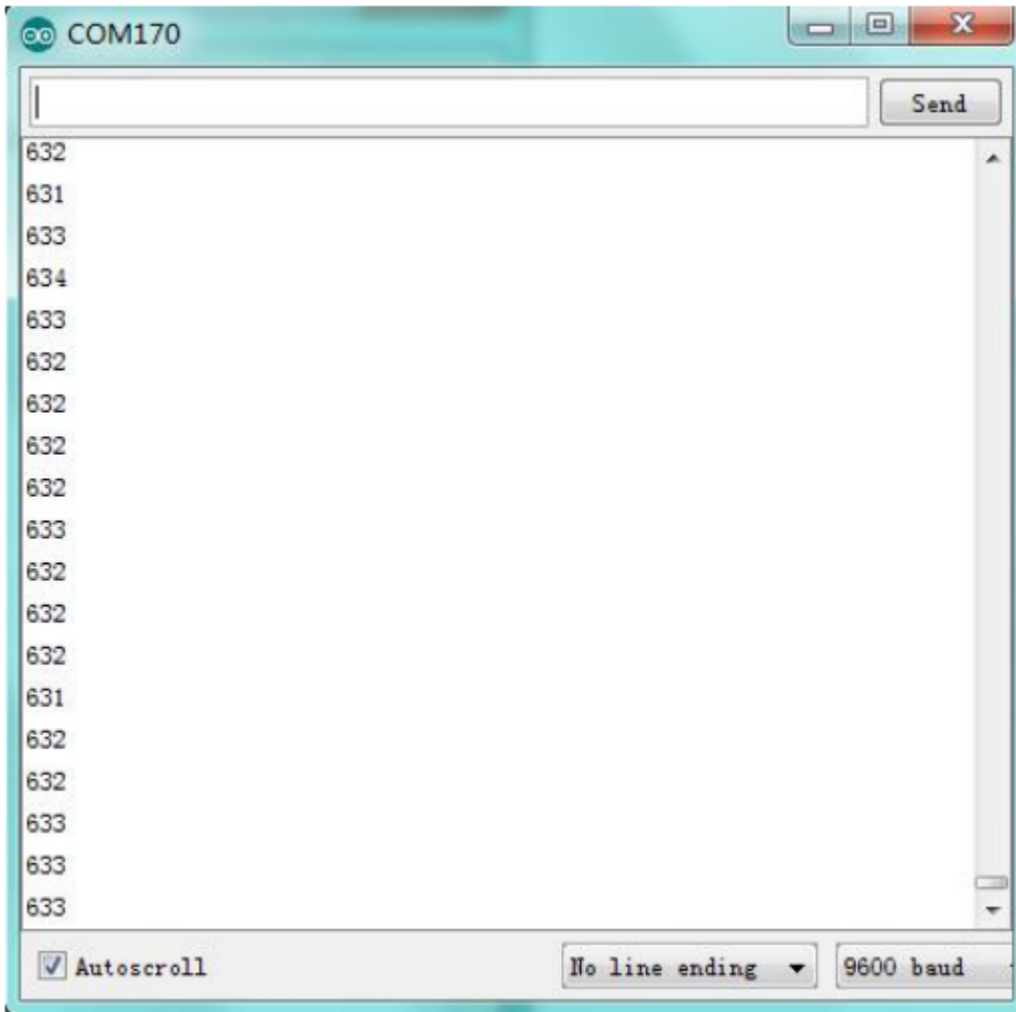
Wire according to the figure, and burn the program. After power on, the D1 light on the water level sensor lights up. Open the serial monitor (Figure 1). Place the sensing position of the sensor in the water(figure 2). The



deeper the sensing position is in the water, the larger the number is, the range is 0-1023.



(figure 1)



(figure 2)